

Innovation and efficiency are at the heart of information technology adoption. Energy efficiency, in particular, has grown into a strategy to streamline IT operations and related costs. Emerson Network Power understands the challenges of bringing together the right infrastructure to support your business. Since 1890, we have enabled our customers to address such challenges through leading edge technologies and best practices.

Let Emerson take on these challenges for you so you can instead focus on growing your business.

Thermal Management

Dynamic computer room air conditioning solutions protect sensitive servers and gear

LCD Console Trays

Provides a variety of features that simplify and provide ease of access to servers, making software upgrades, troubleshooting and system monitoring convenient and less time consuming

AC Power/UPS

Uninterruptible power, power distribution, and enclosure solutions keep IT systems running

Racks & Integrated Cabinets

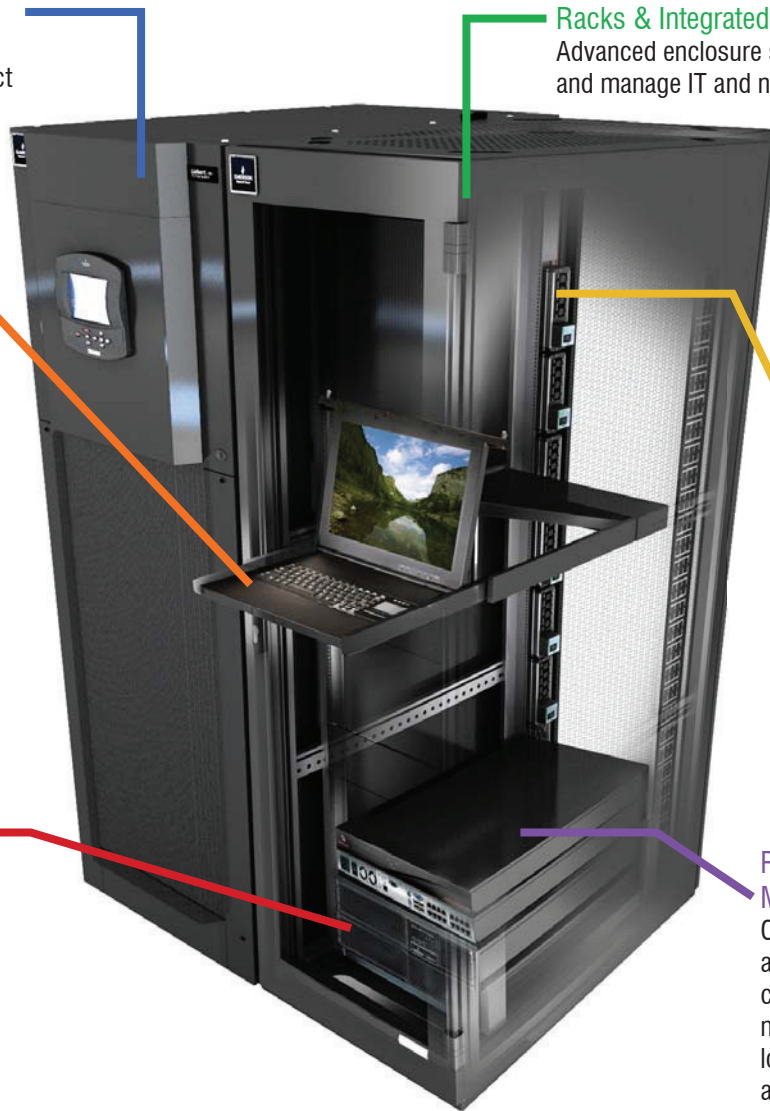
Advanced enclosure systems safeguard and manage IT and networking equipment

Rack Power Distribution Units

Reliable and efficient data centre power distribution units provide basic distribution, remote monitoring and control at the receptacle level in data centre rack environments

Remote Control Management

Converged management appliance that enables customers to remotely manage any device, in any location, from any vendor, at any time in a secure, centralized manner.





AC Power / UPS

Liebert PSA

Line-Interactive UPS

Features and Benefits

- Boost and buck AVR to stabilize the input voltage
- Three to six battery-backed UPS outlets, depending on model size
- One to two surge-only outlets, differentiated by color
- USB communications / shutdown software and cable included
- Up to five minutes of battery backup time of full load
- RJ-45 port for data line surge protection
- 2 years warranty



Applications

- Desktop PCs
- Small Routers, Bridges and Hubs
- Point-of-Sale Terminals

Shutdown & Monitoring Software

- Liebert MultiLink

Liebert PSI

Line-Interactive UPS

Features and Benefits

- More than three (3) mins of internal battery backup time at 100% load
- Buck / boost automatic voltage regulation
- High 0.9 power factor
- Liebert MultiLink software
- 8 to 9 battery-backed outlets
- Rack / tower convertible with rotatable display panel
- 2 years warranty

Applications

- Network Computers
 - Servers
 - Computer Rooms
 - Network Storage Devices
- Monitoring Software
- Liebert MultiLink
 - Liebert IntelliSlot Web Card3



Liebert GXT3

700VA to 3kVA; 5kVA to 10kVA; 10kVA (Tower Model)

On-line UPS

Features and Benefits

- On-line double conversion UPS
- High output power factor (0.9)
- Intellislot for WEB/SNMP management card
- 2 years warranty



Applications

- Network Computers
- Large Network Peripherals
- Network Storage Devices

Monitoring Software & Accessories

- Liebert MultiLink
- Intellislot Webcard - IS-WEBCARD
- Liebert Nform - NFORM-EXP
- Maintenance Bypass Switch
- External Battery Cabinet

Liebert ITA

(6/10/16/20kVA)

On-line UPS

Features and Benefits

- Power factor 0.9*
 - Supports parallel operation up to 4 units (3+1)
 - Backup time prolonged through cascaded connection or large capacity battery bank
 - 92%~94% efficiency
 - 2 years standard warranty
 - LCD display
- *6kVA is PF0.8

Applications

- Small computer rooms requiring long backup time (>30 min)

Shutdown & Monitoring Software

- SiteMonitor
- SNMP /SIC card
- RDU-SIC card



Liebert NX

(10kVA to 40kVA)

On-line UPS

Features and Benefits

- 0.9 output power factor
- On-line Double conversion with high efficiency 94%
- Integrated battery compartment capable of up to 60 mins. of integrated autonomy
- Easy site installation and configuration
- Ecocode efficiency up to 98%
- High capacity battery charger
 - 10-20kVA ~ 4.5kW
 - 30-40kVA ~ 6kW
- Input/output and bypass circuit breakers
- Integrated manual bypass
- Integrated parallel load bus and synchronization port (LBS)



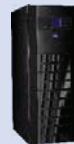
Liebert NX Series

(30kVA to 200kVA)

On-line UPS

Features and Benefits

- Best-in-class input current harmonic distortion of less than 3%
- Capability to handle 0.9 pf loads
- Stratified cooling techniques
- Versatile and simultaneous communication facilities
- Compact UPS footprints
- Capability to handle 100% unbalanced loading
- Provides up to 96% efficiency
- Parallelable up to four units



Applications

- Server Rooms and Mid-sized Data Centres
- Telecommunication (fixed, WLL & mobile) billing and reporting systems
- Networks (LAN, MAN & WAN)
- Industrial Process and Motion Automation for Mid-sized Plants
- Medical Diagnostic/Imaging Equipment

Accessories



Intellislot Webcard
Web Management & Network Monitoring



Rackmount Kit
Guide rail kit for rack mounting of UPS



Liebert MicroPOD
Power Output Distribution & Maintenance Bypass Switch



Liebert LTS
Automatic Transfer Switch (10A/16A/32A)



Liebert Accuvar
Distribution Panel Surge Protection



AC Power / TVSS

ASCO® 200 Series

(30 – 3000A)

Open Transitions Solutions

- Utilized for switching between mains supply and generator supply
- With "Break Before Make", ASCO 200 Series has a transfer time of 166ms 1/6th second
- Open Transition is used predominately for non critical transfers and has a lower cost entry point



ASCO® 7000 Series

(150 – 4000A)

Closed Transitions Solutions

- Utilized for switching between mains supply and generator without interruption
- 'Make before Break' has a transfer maximum parallel time of 100ms (5 Cycles)
- Availability of bypass-isolation configuration which allows transfer switches to be inspected, tested, and maintained without any interruption of power to the load
- Suitable for live generator testing with actual site load, no requirement for load banks. Energy savings with peak lopping may be achieved



ASCO® 230 Series

(32-800A)

Open Transitions Solutions

- Switching between mains and standby generator supply with a break before make mode of operation with a facility for an isolation off position and can be utilised as a manual transfer switch



ASCO® 7000 Soft Load Series

(150-4000A)

Closed Transitions Solutions

- Synchronizes and parallels two independent power sources (transformer to single generator application) without interrupting power flow
- Equipped with soft load protection Transducers and generator controls
- Offers closed transfer (bumpless) no break transfer and typically used for Peak Lopping in Co and Tri generation applications



AC Power / Rack Power Distribution Units

Basic PDU



- Broad range of power distribution capacities
- Robust connectivity solutions package
- Designed to manage power from UPS to each computing and communications hardware
- Available in different power outputs, depending on technical parameter requirement
- Available in rackmount and zero-U form factors

Managed PDU

Liebert MPH



- Extensive measurement functions (power, current, voltage and energy), with high measurement accuracy of up to ± 1%
- Provides compatible monitoring platform for Liebert MPH and Liebert MPX, offering seamless operation if deployed together
- Controls and manages individual receptacles: shuts down non-essential equipment during power outages maximizing availability and back-up power
- Industry-leading operating temperature: up to 55°C
- Predicts over-current conditions before being critical
- Up to 4 Liebert MPX/MPH can be controlled via one IP address

Adaptive PDU

Liebert MPX



- The Liebert MPX is a modular PDU; input and output models can be flexibly configured as required
- Allows user to add individual hot-swappable modules for capacity as demand increases
- Controls and manages individual receptacles and or groups of loads and devices; shuts down non essential equipment during power outage
- Expanded branch overload protection, minimizes threat of cascading PDU overload
- Employs energy efficient receptacle control technology
- Output modules can be changed during running operation; no downtime



Thermal Management

Liebert DM



Variants:

- Air Cooled / Water Cooled
- Chilled Water

Key Features:

- Energy saving mode available
- Adapts to different environments
- Low mean time to repair (MTTR)
- Standard RS485 port for monitoring
- Ultra wide ambient temperature range and multi-condenser configuration
- High sensible heat ratio with scroll compressor technology

Applications:

- Small and medium sized computer rooms
- UPS and battery rooms
- Outdoor electronic and communication equipment rooms
- Transformer stations, substations

Liebert CRV



Key Features:

- Precision cooling and humidity control
- Installs within the row of racks
- Features variable speed EC plug fans and variable capacity digital scroll compressor
- Operates efficiently with Liebert iCOM controls

Benefits:

- Horizontal air flow cooling design is suitable for non-raised or raised floors
- Air, water, glycol and chilled water systems available
- Adjustable airflow baffles maximise cooling to rack equipment, allowing the system to be positioned within the row or at the end of the row
- Multiple units communicate with each other to improve system performance and reduce energy consumption
- Up to 10 racks per cooling unit may be monitored to improve system performance and report rack temperatures

Applications:

- Installs at the ends or within the row of racks on non-raised or raised floor applications
- Ideal for hot/cold aisle configurations
- Optimal performance when used with SmartAisle system

Liebert HPS



Key Features:

- Efficient because of the effective air distribution reached through the displacement cooling concept
- Energy and space saving due to the high efficiency components and the compactness of the innovative freecooling version
- Extremely flexible due to the possibility of selecting among several versions

Benefits:

- Can be configured depending on the main application drivers (noise level, environmental conditions range etc.) and the desired options (freecooling, emergency freecooling, heating etc.)



Infrastructure Management

Avocent® LCD Console Tray



Key Features:

- High quality 17"LCD (1280 x 1024)
- Keyboard with integrated touchpad pointing device
- USB pass-thru for convenient front-of-the-rack connection
- LCD console mount using 1U of rack space

Key Benefits:

- Eliminates the need for cumbersome and inefficient crash cart access
- Downtime can be reduced with immediately accessible monitor, keyboard and mouse at the rack
- Limited access to only those with physical access to the server room

Avocent® Autoview KVM Switch



Key Features:

- Local Port: Support for USB and/or PS/2 user keyboards and mice.
- Single Solution: Support for USB, PS/2, Sun and serial target devices in a single solution
- Space-Saving: CAT-5, thin cabling saves space in the rack and allows up to a 100-foot distance between the server and the switch
- Intelligent Cabling: Server interface modules and integrated access cables automatically assign and retain unique server names for each attached server.
- Powerful User Access Control: An administrator can grant KVM access to only certain users. The administrator can also limit KVM access to only specific targets on the switch

Avocent® Universal Management Gateway



Key Features and Benefits

- Comprehensive DCIM platform in a single pane of glass
- Convenient single U chassis – reduced rack space and footprint
- Complete connectivity (IPMI, SNMP, OPC, Modbus, BACnet, Velocity)
- Physical sensor aggregation
- Easy installation across various remote access technologies
- Up to 40 simultaneous KVM sessions
- Up to 1024 service processors; wide variety of servers managed
- Up to 40 full auto-sensing ports
- KVM and SPM capability per port (using the UMIQ-V2)
- Data collection – up to 10,000 data points per minute
- Real-time information across IT and facilities

Avocent® DSView4 Software



Key Features:

- Secure, remote, centralized data centre management
- Multi-device support
- Virtual media support
- Integrated solution for KVM and power control
- Simple, fast and reliable user interface
- Access service processor managers
- Notifications
- Scheduling
- Multi-platform support
- Failover authentication
- Flexible authentication/access control
- System/User logs
- Selectable encryption modes
- Exit macros
- DS zones

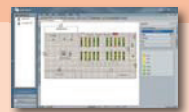
Avocent® Rack Power Manager



Key Features:

- Measure and Track Power Costs – The Rack Power Manager calculates and compares cost across multiple levels (rack, row, data centres or companies) to track cost over a period of time and also to measure the impact of any consolidation or expansion projects
- Review Historical Capacity and Consumption Reports – Plan for future expansion or new facilities more accurately based on real historical data rather than faceplate ratings or best-guess scenarios which result in overbuilding and lead to inefficiencies
- Protect Against Downtime – Help get a total reading on power usage for the data centre and set a maximum threshold of power usage. Set alerts to know when the threshold is reached or exceeded and allow time to make changes before there are actual problems
- Accurately Plan – Help IT know what electrical infrastructure to build into a new location or disaster recovery site. The design can be based on actual historical data rather than faceplate ratings or best-guess scenarios which result in overbuilding and lead to hard-to-correct inefficiencies

Avocent® Data Centre Planner



Key Features:

Inventory management

- Know the physical location and attributes of all the equipment in a data centre
- Search for assets by their characteristics and their physical location
- Reduce the amount of time required to complete mandatory audits
- Decrease unaligned inventory and avoid unnecessary maintenance costs

Configuration management

- Simplify planning and management with a complete model of the environment
- Improve communication with a single source of truth for facilities and IT
- Reduce mean time to repair

Capacity tracking

- Know the infrastructure capacities and align resources to meet the data centre requirements
- Right-size the infrastructure and decrease costs associated with over-provisioning and risks associated with under-provisioning

Reporting

- Improve decision-making with comprehensive analytics
- Gain detailed insight into the infrastructure status and equipment managed

Intuitive visual interface

- Enhance process efficiency and minimize system administration
- At-a-glance infrastructure status and predictive modeling



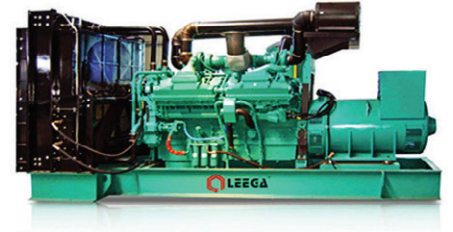
Mobile Lighting Tower

- 4000W, 4200 sq. metre coverage
- Two tier diesel emission compliant
- Sound-proof enclosure
- 9 metre hydraulic mast
- Lights can be individually switched
- Fork lift points, levelling system



Perkins Generator

- World-leading brand in electric power
- Quality Assurance
- Rigorous factory testing
- Up to 3,250 KVA capacity
- Long service life
- Safe, stable and reliable power



Cummins Generator

- World-leading brand in electric power
- Quality Assurance
- Rigorous factory testing
- Up to 3,250 KVA capacity
- Long service life
- Safe, stable and reliable power



Containerized Generator

- Efficient and easy transport of larger generators
- Customized designs available
- Sound proof material, fire-rated
- Shock absorbing mat under generator
- Standard fork lift positions
- Airflow management
- Multiple generators can reside inside



Silent Canopy Generator

- < 65dBa on smaller gensets
- < 75dBa on larger gensets
- Customized designs available
- Sound proof material
- Standard fork lift positions
- Patented design
- Rigorous factory testing
- Waterproof, dustproof



Automatic Transfer Switch (ATS)

- < 65dBa on smaller gensets
- < 75dBa on larger gensets
- Large range available
- Mechanical and electrical interlock
- Quality brand components used
- Patented design
- Rigorous factory testing
- Surge protected



Services

- Start up Guarantees that the UPS is running at optimum performance
- On-Site Labor Immediate access to on-site support whenever required
- Extended Warranty Extends the useful life of the equipment
- Preventive Maintenance Promotes higher reliability and reduces risk of downtime
- Comprehensive Maintenance Promotes peace of mind with equipment maintenance
- Data Centre Audit Provides a clear picture of the current status and health of the IT infrastructure compared with industry best practices.
- Battery Monitoring Assures that batteries are in good health, monitored on-line.
- Remote Monitoring Service Round the clock monitoring of the IT facility with the help of a monitoring expert.



Racks & Enclosures

Key Features:

- With 75% door perforation rate that enhances heat management
- Front and rear doors are perforated for cooling efficiency
- With additional blanking panel to separate cold and hot spots in the rack
- Combined integrated steel frame design
- With rack static load capacity of 1,300 KG
- Accessories available for cabling and air flow management
- Customized features for specific requirements in data centre



Unit 6/22 Moselle Ave, Henderson, Auckland, New Zealand
 11 Broomleigh Dr, Rolleston, Christchurch, New Zealand
 PO Box 21-872, Henderson, Auckland, New Zealand
 Phone: +64 9 833 5749
 Fax: +64 9 833 5726
 Email: info@LPINZ.co.nz
 Web: www.LPINZ.co.nz